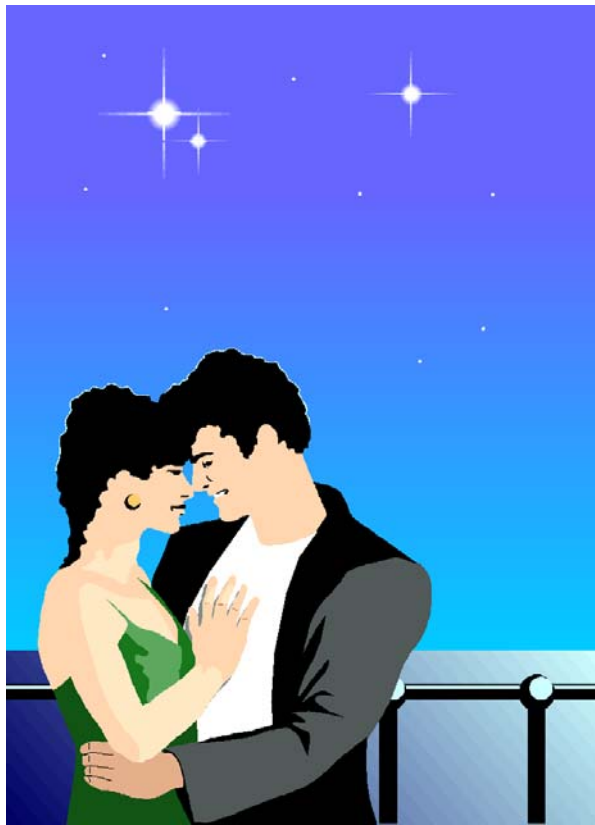


# LOVE CARDS

FIND LOVE REPORT



FOR  
JOHNNY

# About Your Find Love Report



This report is designed primarily to show someone looking for a new relationship when such a new relationship is likely to be formed. Whether you are married or single, you can use this report to determine when a new love interest, love affair, or marriage is likely to occur.

Any influence over 7 in the Power category is considered powerful and very likely to result in a new relationship, provided you meet the specific criteria for each influence found. Some influences, for example, are only for meeting a man, thus heterosexual males would not benefit from such a connection.

When strong love influences are present, this is the time to safely engage in new relationships or to expand the scope of your searching. If you are truly ready to meet someone new when these influences appear, just make yourself available to see the magic work wonders in your life.

## How to Read this Report

The influences found are listed in start date order starting at the beginning of the time period specified. The start date of any influence is shown, along with how many days that influence is in effect.

The Power of any influence is shown in the next column. The numbers range from 1 to 10, with 10 being the strongest influence possible. You should pay attention to any influence over 7 in the Power category since those are likely to give the strongest results.

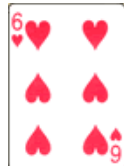
The position and card found are listed next, for those who want to research these influences more. And finally, a brief interpretation of each influence is given.


# Find Love Report for Johnny





Start Date   Days   Powe   Position


Card Influence


12/18/2021	365	9	Result	
This influence presents the possibility of a destined romantic relationship that will occur before your next birthday. This is by no means a guarantee as it has several other possible meanings. Look for other influences this year to find out how this might manifest for you.				


2/9/2022	52	10	Venus	
This is a very powerful marriage influence, one of the most powerful. Though no guarantee, it does promise romantic and love stability and happiness. It is one of the best influences for building a family, settling down, buying a house, etc. Your heart will be full at this time, hopefully for a long time to come.				

4/2/2022	52	8	VMars	
Your charm and animal magnetism are at their strongest now. If you are single and want to attract someone, you will get everything you want during this period. Try to get clear about exactly what you want before this period begins. Then, go out and be around others to watch the magic happen.				

9/5/2022	52	7	Uranus	
This indicates a time period where you are interested in, and perhaps romantically involved with two or more people. Even if you have only one partner, you may find yourself tempted by another and have your mind whirling around about it. Romantic partners tend to crop up at group gatherings under the Uranus influence.				

9/5/2022	52	5	VUranus	
This can represent an unexpected or unusual romantic and sexual affair. This can even mean a bisexual or homosexual affair. In any event it is likely to come as a surprise to you and would probably be with someone who is a part of a group you belong to. Just keep in mind that Uranus relationships often end as unexpectedly as they begin.				

12/18/2022	52	7	Mercury	
This year you have the power to have most anything or anyone that you want in the area of personal and professional relationships. If you are single during this year, it can only be because this is what you want. Use this power to create or attract the perfect partner or partners to you!				

2/9/2023	52	8	VVenus	
You will be surprised and delighted by the attention you receive from potential love interests during this period. In effect, you will be able to have whomever or whatever you want. This is a rare influence so do not waste it. Use this power to create exactly what you desire in the area of love and romance.				

# Find Love Report for Johnny



Start Date   Days   Powe   Position

Card Influence

4/2/2023	52	7	VMars
----------	----	---	-------

This influence will give you popularity among friends and other groups that can present you with many opportunities for romantic enjoyment. Make sure you get out to social events and places where groups of people are found to take full advantage of this influence.



5/24/2023	52	6	Jupiter
-----------	----	---	---------

This influence is not usually associated with romantic relationships, but under certain conditions it can be. If so, it would likely be with someone you have business ties to. Just keep in mind that this influence is not nearly a guarantee of romance that some are. It is usually about friends doing business together.



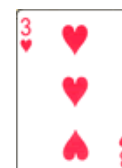
2/9/2024	52	10	VVenus
----------	----	----	--------

This is one of the most powerful marriage influences that exist. Even if marriage is not in your plans, this could indicate a very satisfying romantic and sexual relationship. Love is in the air!



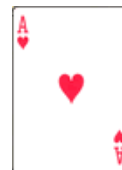
9/5/2024	52	7	Uranus
----------	----	---	--------

This indicates a time period where you are interested in, and perhaps romantically involved with two or more people. Even if you have only one partner, you may find yourself tempted by another and have your mind whirling around about it. Romantic partners tend to crop up at group gatherings under the Uranus influence.



12/18/2024	365	7	Long Range
------------	-----	---	------------

This card often indicates a year of focusing on loving oneself and aloneness. But it can also represent a new love that is demanding your attention, or even a new child.



12/18/2024	365	7	Environmen
------------	-----	---	------------

This indicates a fortunate relationship that will appear in your life this year, one that was destined to occur for your benefit. This is not guaranteed to be a romantic relationship, but it certainly could be. Look for other influences this year to get more specific timing on it and who it might be with.



12/18/2024	52	7	Mercury
------------	----	---	---------

This influence indicates your involvement with two or more people. So, if you are single this is an indicator of lots of relationship activity in your life. Mars tends to make relationships passionate, and sometimes aggressive. It is possible that this influence could be a mixture of both for you, but involving two or more objects of your affection.



# Find Love Report for Johnny



Start Date   Days   Powe   Position

Card Influence

2/9/2025	52	10	Venus
----------	----	----	-------

This is one of the most powerful marriage influences that exist. Even if marriage is not in your plans, this could indicate a very satisfying romantic and sexual relationship. Love is in the air!



9/5/2025	52	4	VUranus
----------	----	---	---------

This indicates a time period where you are interested in, and perhaps romantically involved with two or more people. Even if you have only one partner, you may find yourself tempted by another and have your mind whirling around about it. Romantic partners tend to crop up at group gatherings under the Uranus influence.



10/27/2025	52	8	Neptune
------------	----	---	---------

You may find yourself both wishing for more romantic activity this year, but also worried about whether or not you will get enough love. During this period, all this mental activity could cause you to be very confused, and you may actually have several love interests in mind. Try not to make important relationship choices or decisions until after your next birthday.





